

Replacing the Stainless-Steel Burner in a Fire on Water Pilot Burner Assembly

Over time the stainless-steel burner in a Fire on Water Pilot Burner Assembly will become clogged due to carbon buildup. When this happens the flame within the Pilot Burner Assembly is too small to adequately heat the thermal sensor in the Pilot Burner Assembly which results in the feature cycling on and off as opposed to running continuously. The remedy is to replace the stainless-steel burner. For features used daily it is recommended the stainless-steel burner be replaced every 6 months. The stainless-steel burner is located under the circular Wind Cage.

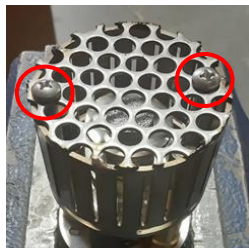


Stainless-Steel Burner

Tools needed: 5/8" Deep Socket / Phillips Screwdriver



STEP 1: Remove (2) Phillips Screws from the Wind Cage



Before



After

STEP 2: Remove Wind Cage and remove flat washer from Stainless-Steel Tip.



Before



After

STEP 3: Remove Stainless-steel Burner using the 5/8" Deep Socket