

Negative Edge Fire Features



50' Negative Edge Fire Feature – Hawaii

The cleanest way to install the gas and electric associated with the Negative Edge Fire Feature is to install it inside the dam wall. This is particularly desirable when the dam wall will be visible from the yard after the pool is complete. When the components are installed in the dam wall the finished install looks like a “chin up bar” has been installed on the dam wall as shown in the photos below.



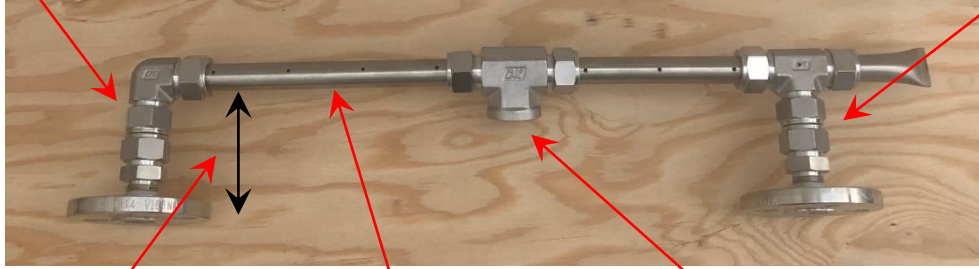
On the following pages, you will see one example of how to Install a Negative Edge Fire Feature

Introduction to the Hardware for the Negative Edge

Main Burner

Main Burner END
Mounting Bracket

Main Burner MID
Mounting Bracket



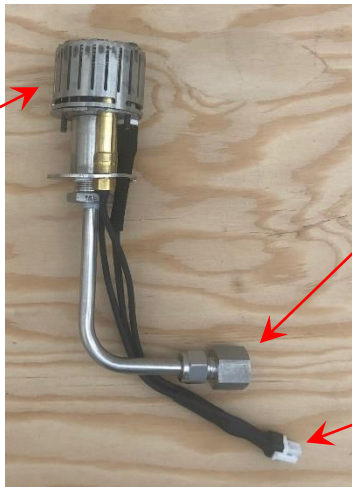
Typical Bracket
Length: 6"

Main Burner

Main Burner Gas Inlet
(Typically $\frac{3}{4}$ " FIP)

Pilot Burner

Pilot Burner
Burner Section



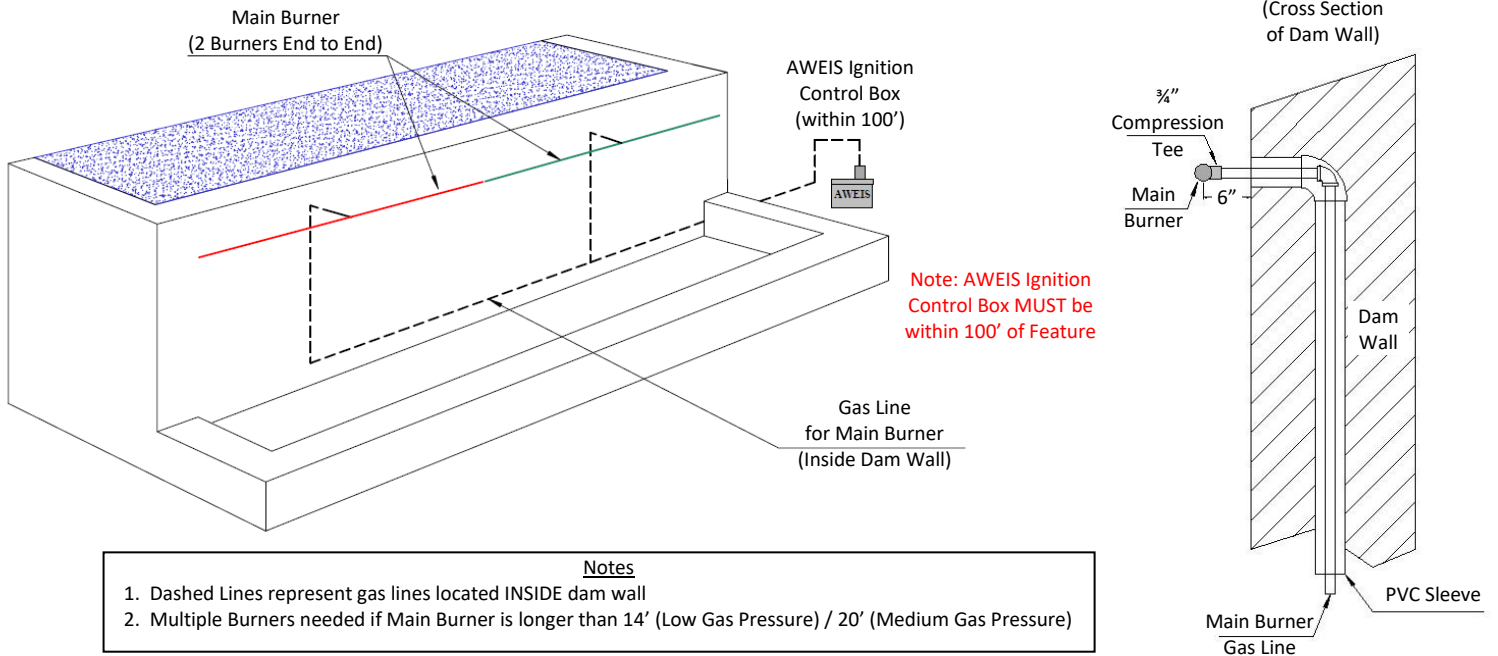
Pilot Burner
Gas Inlet
(Typically $\frac{1}{2}$ " FIP)

Pilot Burner
Electrical
Connection

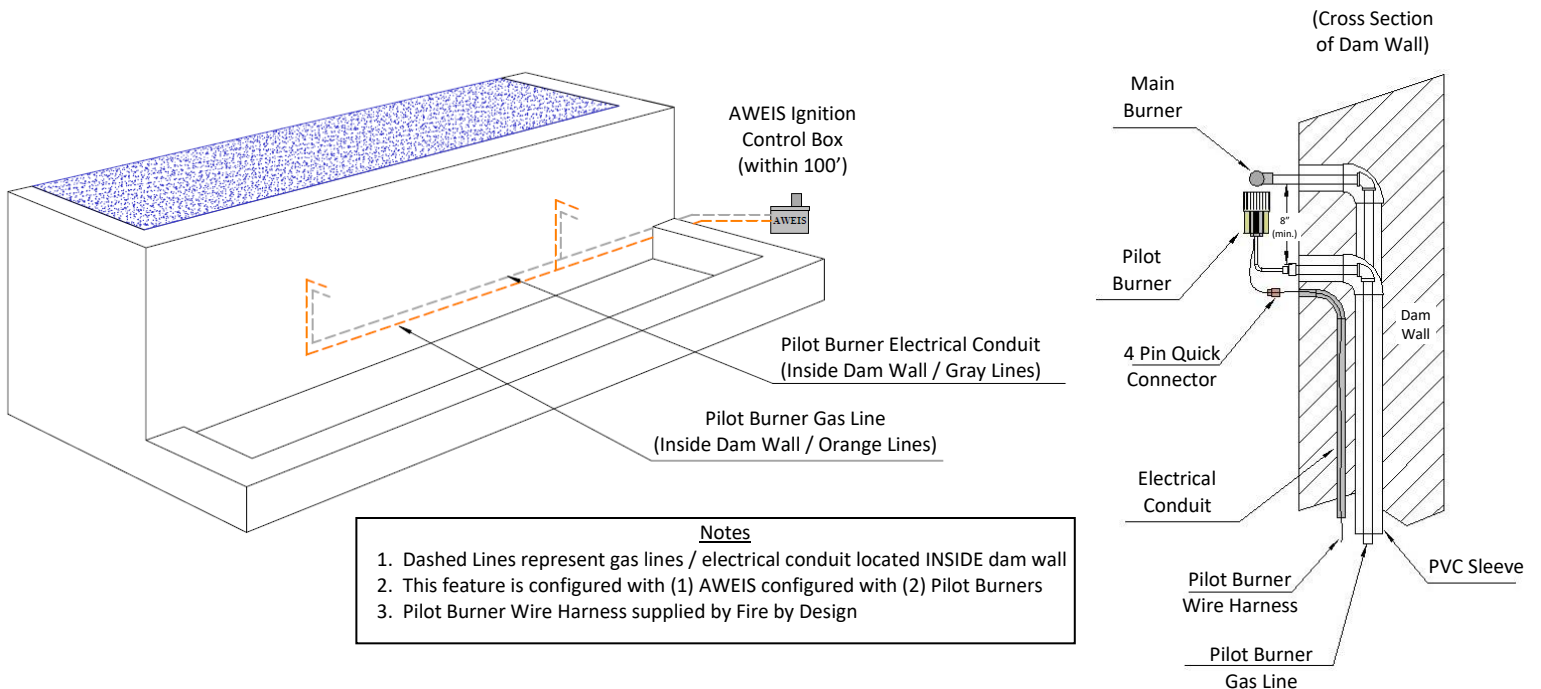
The drawings on this page and following pages are for illustration purposes ONLY.
 The Plumbing and Electrical for YOUR Negative Edge Feature may be different!

Plumbing and Electrical Rough In

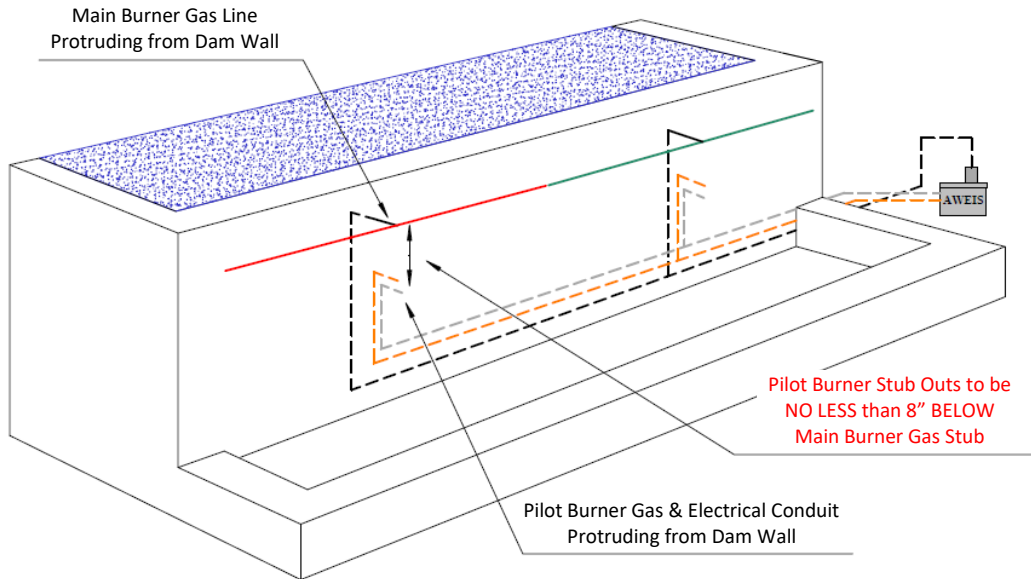
Main Burner Gas Plumbing



Pilot Burner Gas Plumbing & Electrical

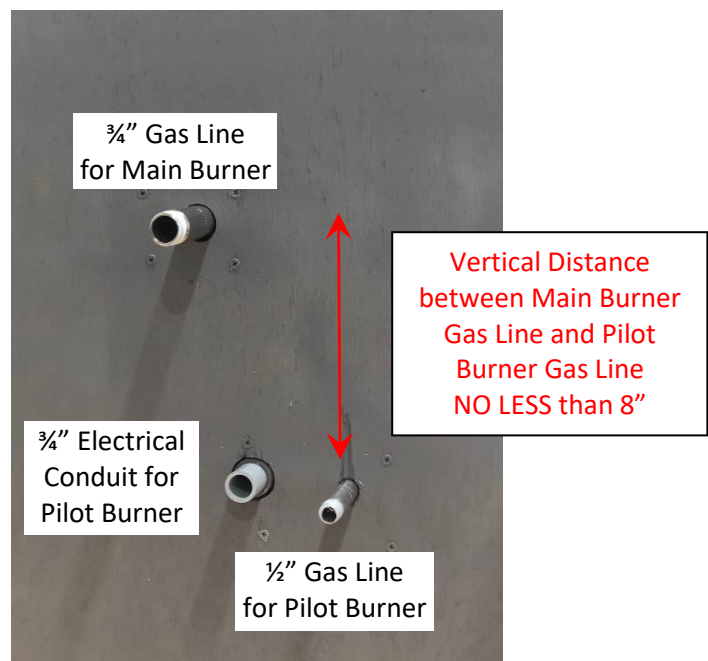


Main Burner and Pilot Burner Rough In (Relative to Each Other)

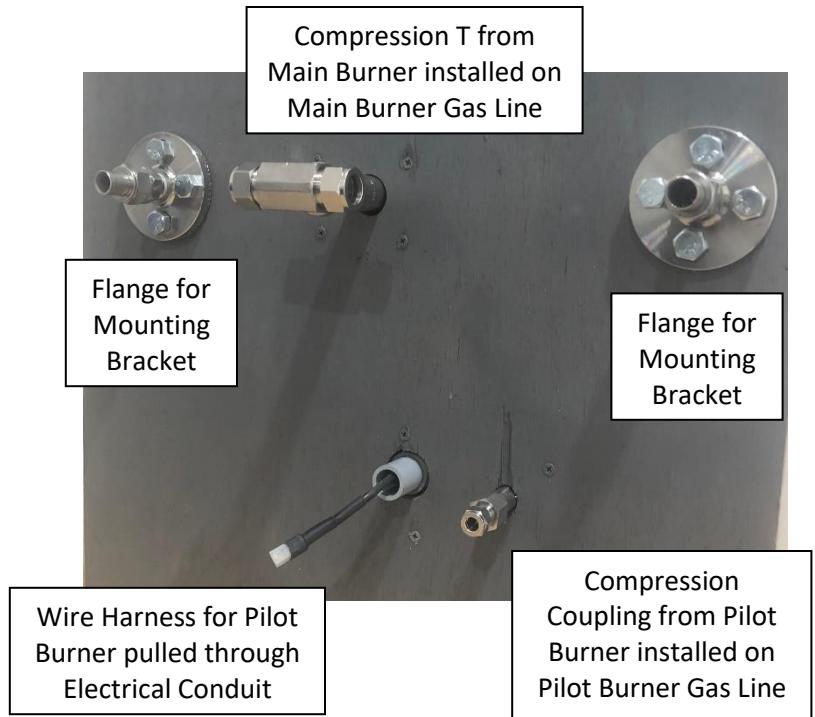


Step by Step Instructions for Installing the Hardware

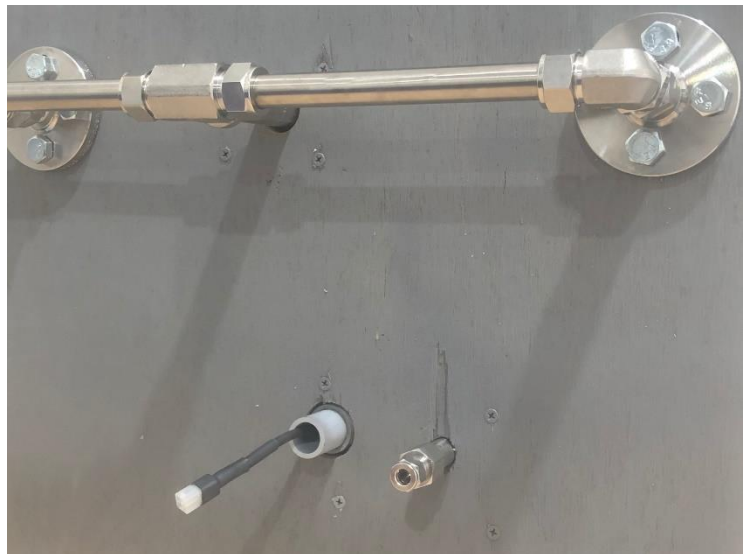
At right you see a photo of a mockup of what a typical rough in for a Negative Edge Fire Feature should look like. The Main Burner Gas Line is above the Pilot Burner Gas Line by at least 8". The Main Burner Gas Line size is typically a $\frac{3}{4}$ " gas line and the Pilot Burner Gas Line is typically a $\frac{1}{2}$ " gas line. Recommended electrical conduit size for the Pilot Burner electrical wire harness is $\frac{3}{4}$ ".



At right you see a photo of some of the Negative Edge Hardware being mounted to the side wall of the Negative Edge of the pool. The “Flange for Mounting Brackets” will be the supports for the Main Burner. The Compression T for the Main Burner has been installed on the Main Burner Gas Line. The Compression Coupling for the Pilot Burner has been installed on the Pilot Burner Gas Line. And the Wire Harness which is supplied with the AWEIS has been pulled through the electrical conduit.



At right you see a photo showing the Main Burner and the balance of the Mounting Bracket hardware has been added to support the Main Burner.



At right you see a photo showing the Pilot Burner has been installed by connecting it to the Pilot Burner Gas Line and connecting it to the wire harness protruding from the electrical conduit.

Installation Complete!

