

Negative Edge Fire Features



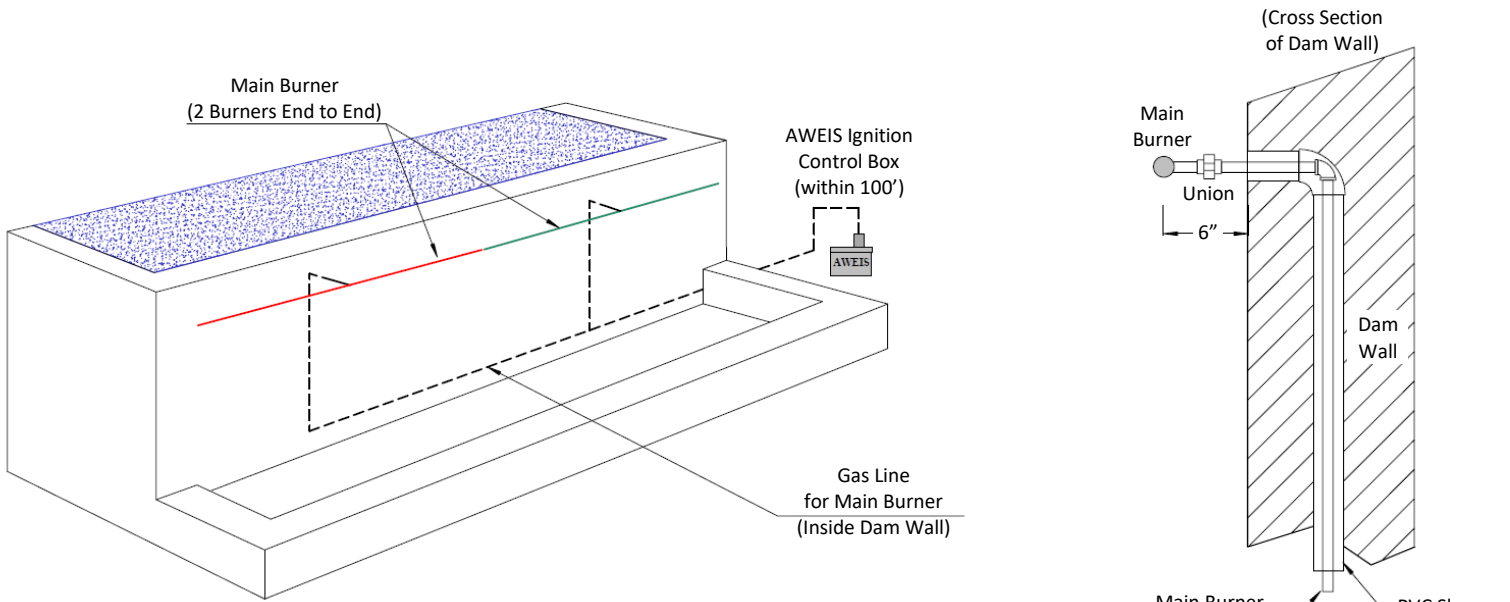
30' Long Negative Edge Fire Feature – Las Vegas, NV

The cleanest way to install the gas and electric associated with the Negative Edge Fire Feature is to install it inside the dam wall. This is particularly desirable when the dam wall will be visible from the yard after the pool is complete. When the components are installed in the dam wall the finished install looks like a “chin up bar” has been installed on the dam wall as shown in the photos below.



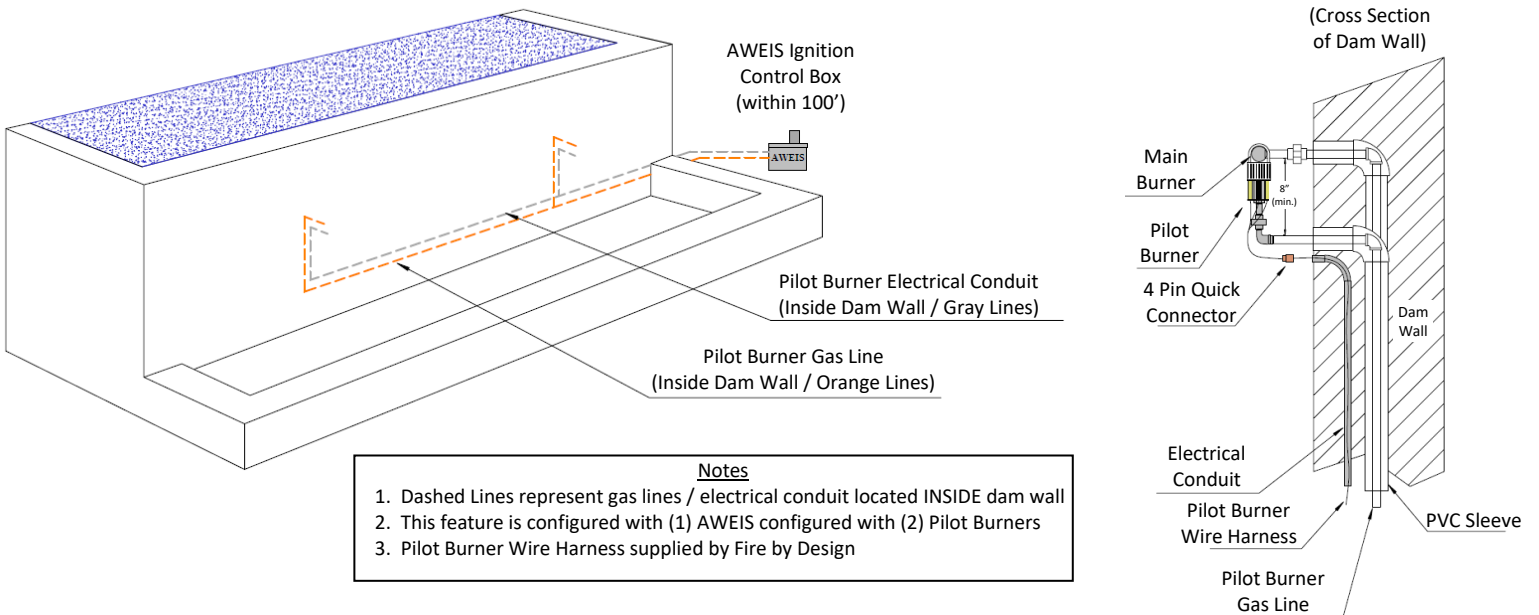
On the following pages, you will see one example of how to Install a Negative Edge Fire Feature

Main Burner Gas Plumbing



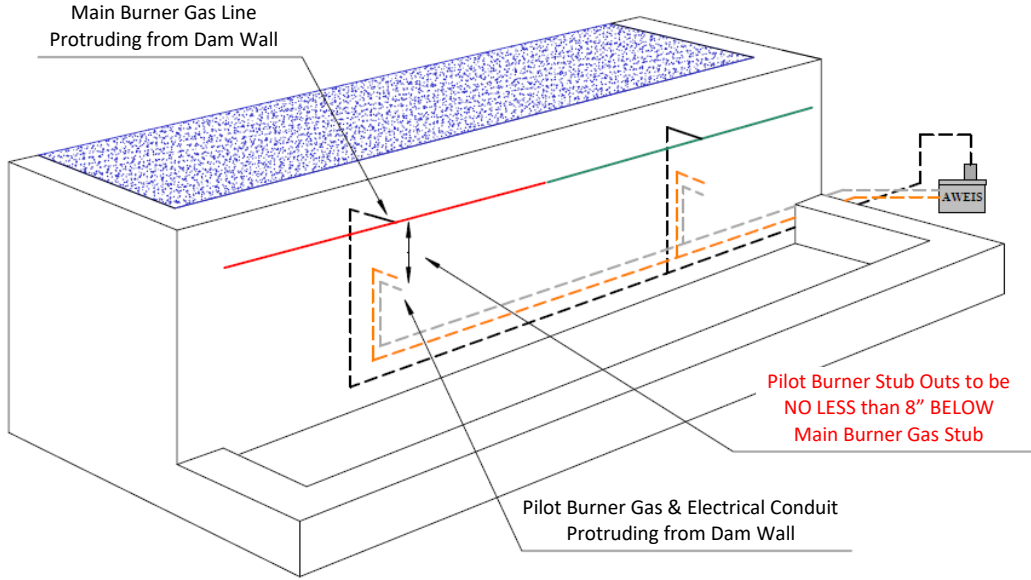
- Notes
1. Dashed Lines represent gas lines located INSIDE dam wall
 2. Multiple Burners needed if Main Burner is longer than 14' (Low Gas Pressure) / 20' (Medium Gas Pressure)

Pilot Burner Gas Plumbing & Electrical

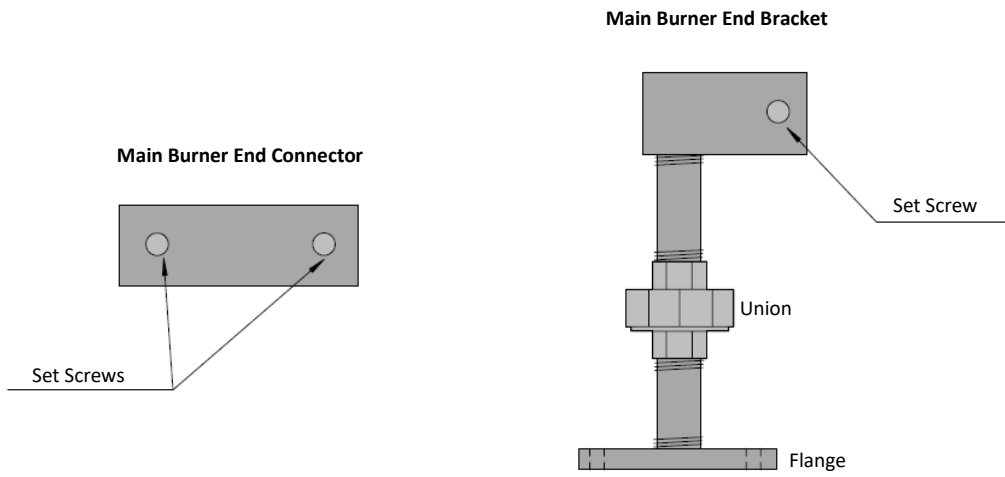


- Notes
1. Dashed Lines represent gas lines / electrical conduit located INSIDE dam wall
 2. This feature is configured with (1) AWEIS configured with (2) Pilot Burners
 3. Pilot Burner Wire Harness supplied by Fire by Design

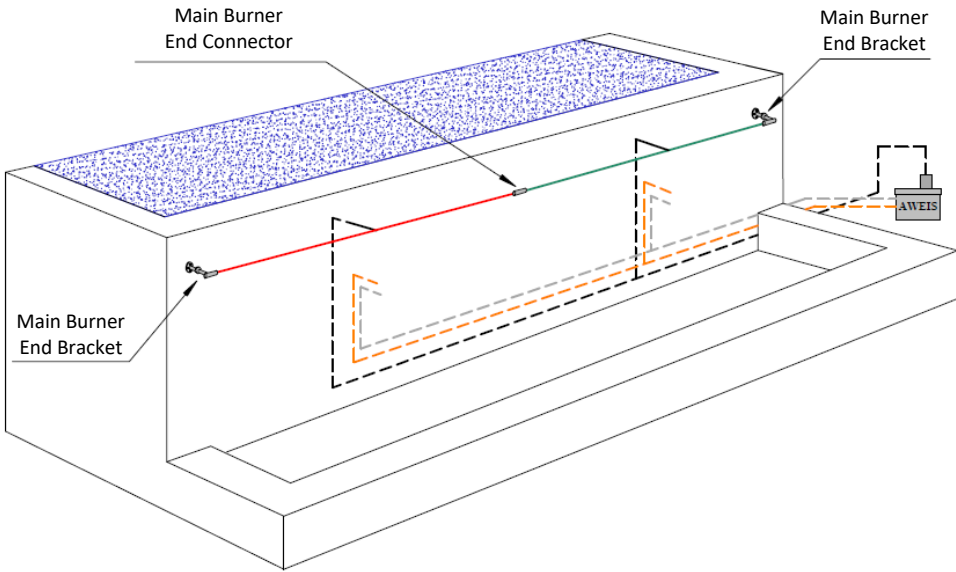
Main Burner and Pilot Burner Rough In
(Relative to Each Other)



Main Burner Hardware



Main Burner Hardware - Installed



Below are a couple of photos from an Install of a 40' Negative Fire Feature. This is by no means the only way to make these connections however there is nothing wrong with the connections pictured.



Close Up of Pilot Burner supported by Main Burner



Close up of Main Burner Gas Connection